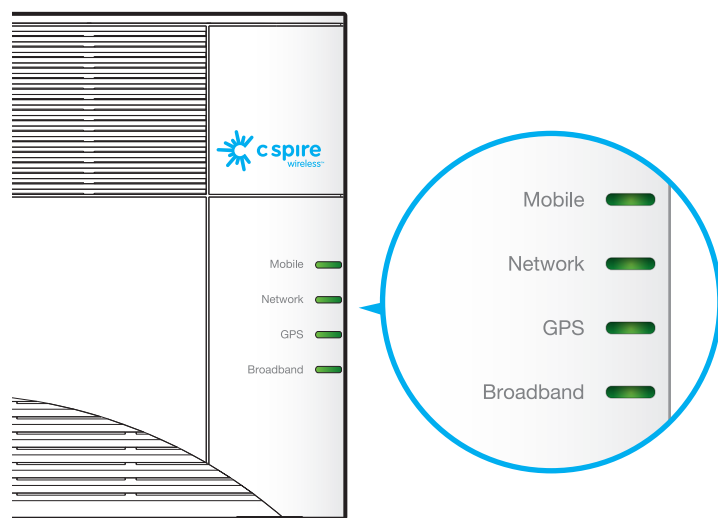


## 5 Monitor the automated startup process

- A** Wait as the LEDs on your Indoor Cell Zone flash while it initializes and acquires a GPS lock. When the Mobile, Network, GPS, and Broadband LED lights stop blinking and turn solid green, your Indoor Cell Zone is ready to use. This process can take up to two hours.



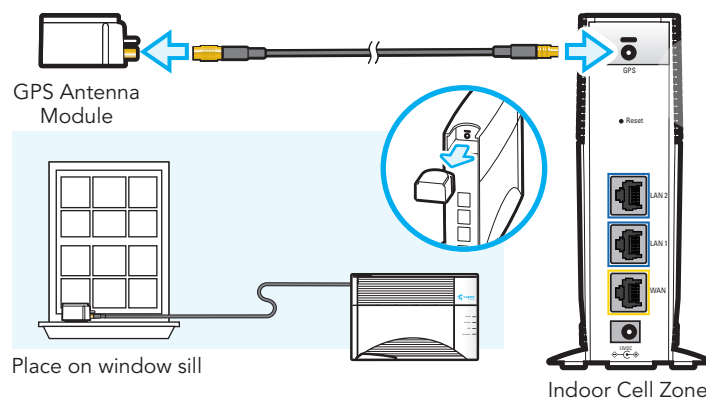
- B** Use your mobile phone to make a test call. Listen for three short beeps. When you hear the beeps, this means that you are within range of the Indoor Cell Zone.

**NOTE:** You will always hear three short beeps when placing or receiving calls on your wireless phone if you are within range of your Indoor Cell Zone.

## 6 Connect the external GPS antenna (if needed)

It may take up to 30 minutes for the GPS LED light to become solid green. If the GPS LED continues blinking, you need to connect the external GPS antenna.

- A** Remove the GPS antenna module from the back of the Indoor Cell Zone (see inset in drawing). Connect the GPS cord to the antenna module and the Indoor Cell Zone.
- B** Place the external GPS antenna module horizontally on a window sill. The antenna works best in an open area where it can easily pick up signals.



**NOTE:** In large homes, the external GPS antenna can be used to allow the Indoor Cell Zone to be placed in a more central location, allowing for even more coverage throughout the house.



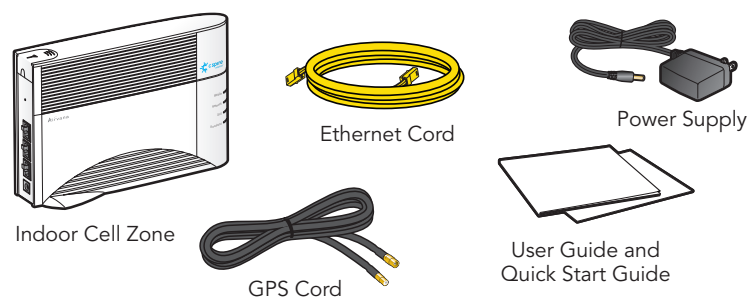
C Spire Customer Care:

- Online ([www.cspire.com/indoorcellzone](http://www.cspire.com/indoorcellzone))
- Text 611
- Call at 1-855-CSPIRE5 (277-4735)

# C Spire Indoor Cell Zone Quick Start Guide



## 1 Check what's in the box



**NOTE:** Your Indoor Cell Zone requires high-speed Internet access via broadband modem, DSL modem, or fiber broadband Internet service.

## 2 Choose a location for your Indoor Cell Zone

Place your Indoor Cell Zone in a high position near an exterior window and within reach of your broadband modem/router. See the *C Spire Indoor Cell Zone User Guide* for more details.

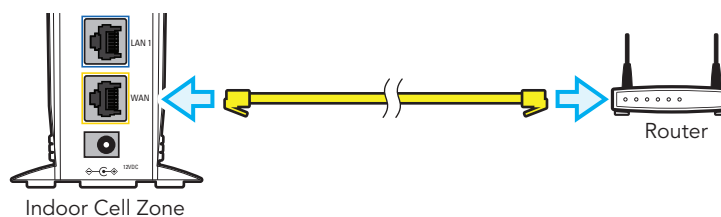
- Keep the device free of dust.
- Do not put the device in the sun.
- Do not put the device near a heat source.
- Do not put in an enclosure with limited airflow.
- Do not let any liquid come in contact with the device.
- Do not put the device next to any appliances that may cause radio interference (for example, TVs, microwaves, etc.)



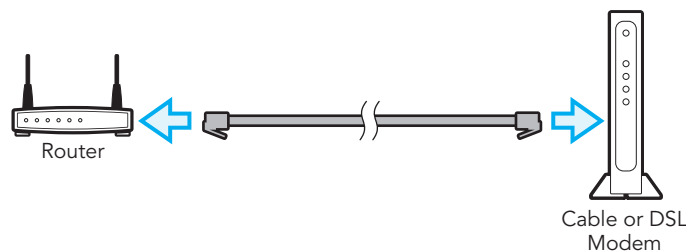
## 3 Connect your Indoor Cell Zone to the Internet

- A** Disconnect all power on your network, including your cable or DSL modem and router.
- B** Connect one end of the yellow Ethernet cable into the WAN port at the back of your Indoor Cell Zone, then connect the other end of the cable to your router.

**NOTE:** If you are not using a router, connect directly into the modem.

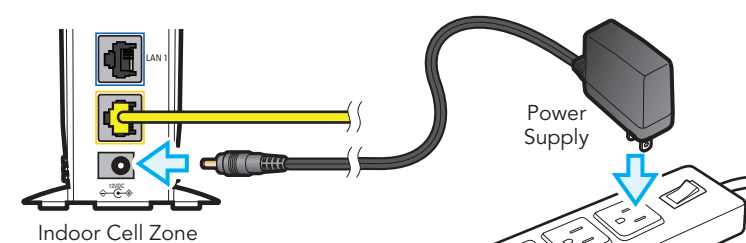


- C** Connect the router to your cable or DSL modem.



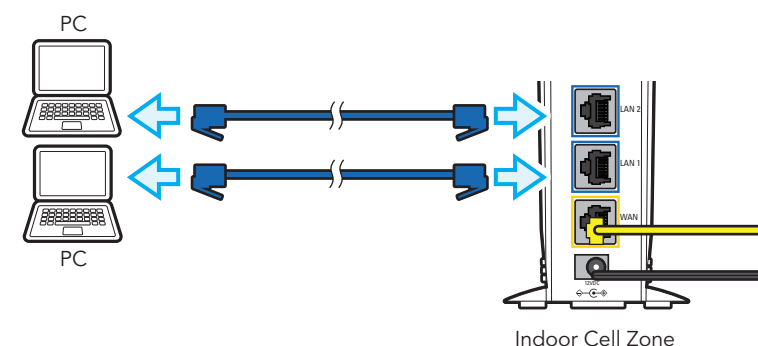
- D** Reconnect the power to your modem and router, then wait several minutes for the modem and router to power up and initialize.

- D** Plug the power supply connector into the back of your Indoor Cell Zone, then plug the power supply into an available electrical outlet. (We recommend a power strip with surge protection.)



## 4 Setting up optional components

You can connect up to two PCs to your Indoor Cell Zone's blue LAN ports.



© 2013 C Spire and the logo are trademarks of C Spire. Airvana and the logo are trademarks of Airvana LLC.

P/N: 910615 Rev1.03

